

Oregon State University

Fall Term 2011

International Student Enrollment Report

This report represents statistics for international student enrollment at OSU during fall term 2011. This report reflects fall term enrollment as of week 3 of the term and General English (GE) session 1 only. This report does not include Distance Degree students.

Student Status	Total
New (includes students starting new degree program after INTO OSU)	979
Continuing (includes change of levels from undergrad to grad)	1380
Grand Total	2359

Gender	Total
Female	732
Male	1627
Grand Total	2359

Sources of New Student Enrollment	Total
Progression from INTO OSU to OSU	144
(Numbers include students who met progression requirements to OSU after Spring or Summer term 2011: 1 GE, 16 AE, 101 PW, 26 GPW)	
Newly admitted	751
Immigration Transfer*	84
Grand Total	979

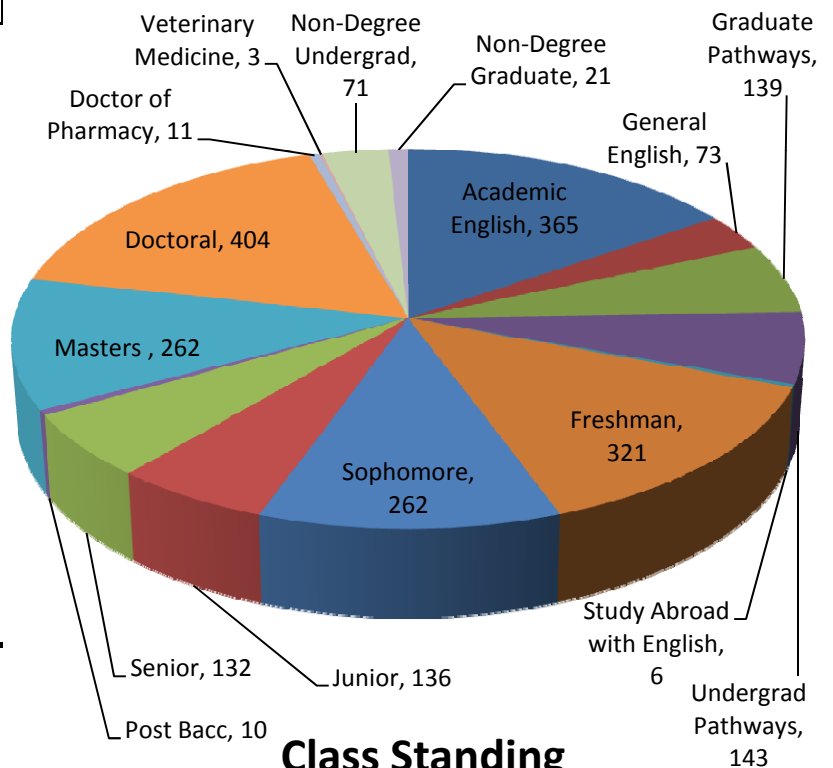
*Students previously enrolled in a US institution within the last five months

Class Standing	Total
INTO OSU Academic English	365
INTO OSU General English (GE Session 1)	73
INTO OSU Graduate Pathways	139
INTO OSU Undergrad Pathways	143
INTO OSU Study Abroad with English*	6
Freshman	321
Sophomore	262
Junior	136
Senior	132
Post Baccalaureate	10
Masters	262
Doctoral	404
Doctor of Pharmacy	11
Veterinary Medicine	3
Non-Degree Undergrad	71
Non-Degree Graduate	21
Grand Total	2359

*International students in their second year at their home university who come to OSU to participate in a program which includes English language and academic classes. This program is for students who do not intend to continue on to an OSU degree seeking program.

Visa Type	Total
F1	2160
J1	149
N/A	20
Other*	30
Grand Total	2359

*Other includes other visa types and Pending Permanent Residents



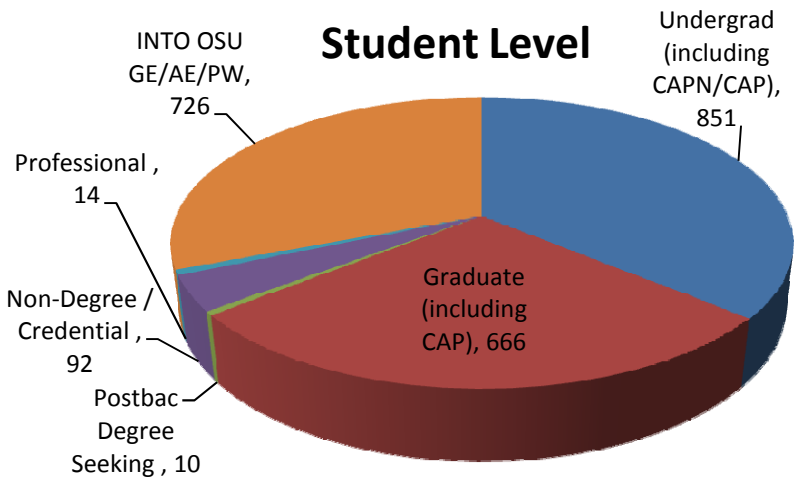
Class Standing

Conditional Admission Program	Total
CAP No TOEFL	99
CAP Undergraduate	44
CAP Graduate	16
Grand Total*	159

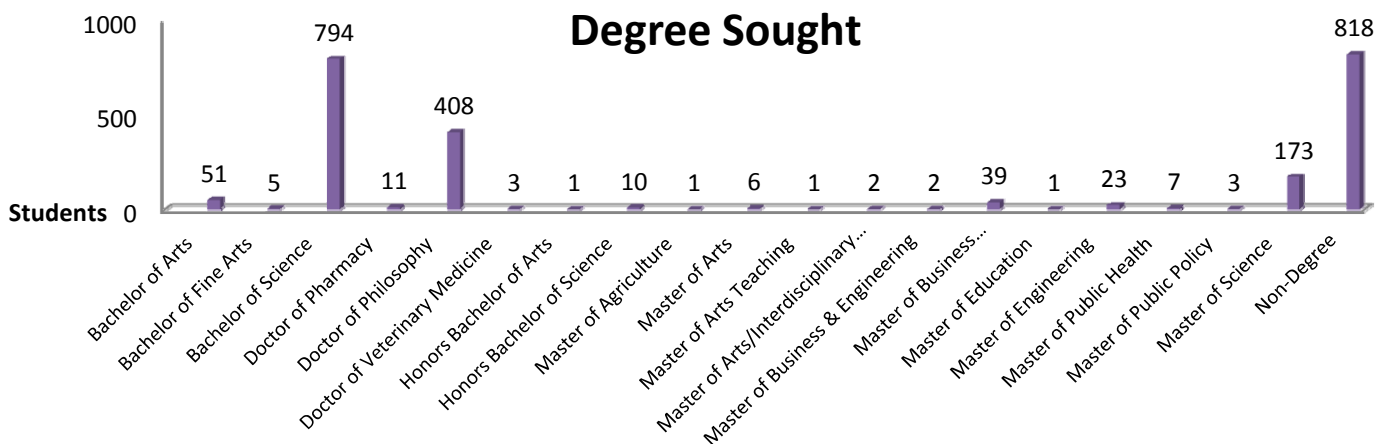
*CAP Grand Total based on fall term 2011 rate codes

Student Level	Total
Undergraduate (including CAPN/CAP)	851
Graduate (including CAP)	666
Postbac Degree Seeking	10
Non-Degree / Credential	92
Professional	14
INTO OSU GE/AE/Pathways* (GE Session 1)	726
*CAP and CAPN students take language courses at INTO OSU	
Grand Total	2359

Student Type	Total
Academic English	365
Doctor of Pharmacy	12
Doctoral	404
Freshman - Early Admit	117
Freshman (< 36 transfer credits)	398
General English (GE Session 1)	73
INTO OSU Graduate Pathways	139
INTO OSU Undergrad Pathways	143
Masters	262
Non-Degree Graduate	21
Non-Degree Undergrad	72
Post Baccalaureate	10
Readmit	6
Study Abroad with English	6
Academic Transfer (> 36 transfer credits)	328
Veterinary Medicine	3
Grand Total	2359



Degree Sought	Total
Bachelor of Arts	51
Bachelor of Fine Arts	5
Bachelor of Science	794
Doctor of Pharmacy	11
Doctor of Philosophy	408
Doctor of Veterinary Medicine	3
Honors Bachelor of Arts	1
Honors Bachelor of Science	10
Master of Agriculture	1
Master of Arts	6
Master of Arts Teaching	1
Master of Arts/Interdisciplinary Studies	2
Master of Business & Engineering	2
Master of Business Administration	39
Master of Education	1
Master of Engineering	23
Master of Public Health	7
Master of Public Policy	3
Master of Science	173
Non-Degree	818
Grand Total	2359



Divisions/Colleges

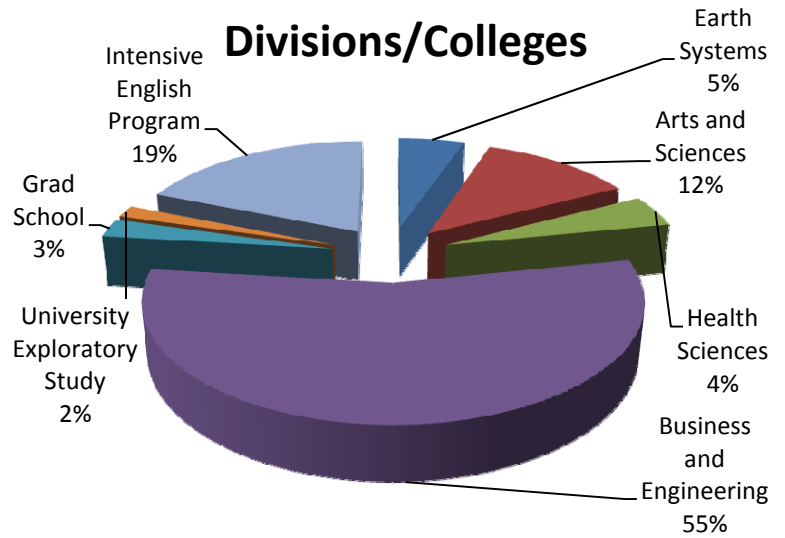
Earth Systems		Total
College of Agricultural Science		82
College of Forestry		25
College of Oceanic & Atmospheric Sci.		17
Total		124

Arts and Sciences		Total
College of Education		3
College of Liberal Arts		73
College of Science		209
Grand Total		285

Health Sciences		Total
College of Health & Human Science		52
College of Pharmacy		29
College of Public Health & Human Sci.		21
College of Veterinary Medicine		5
Total		107

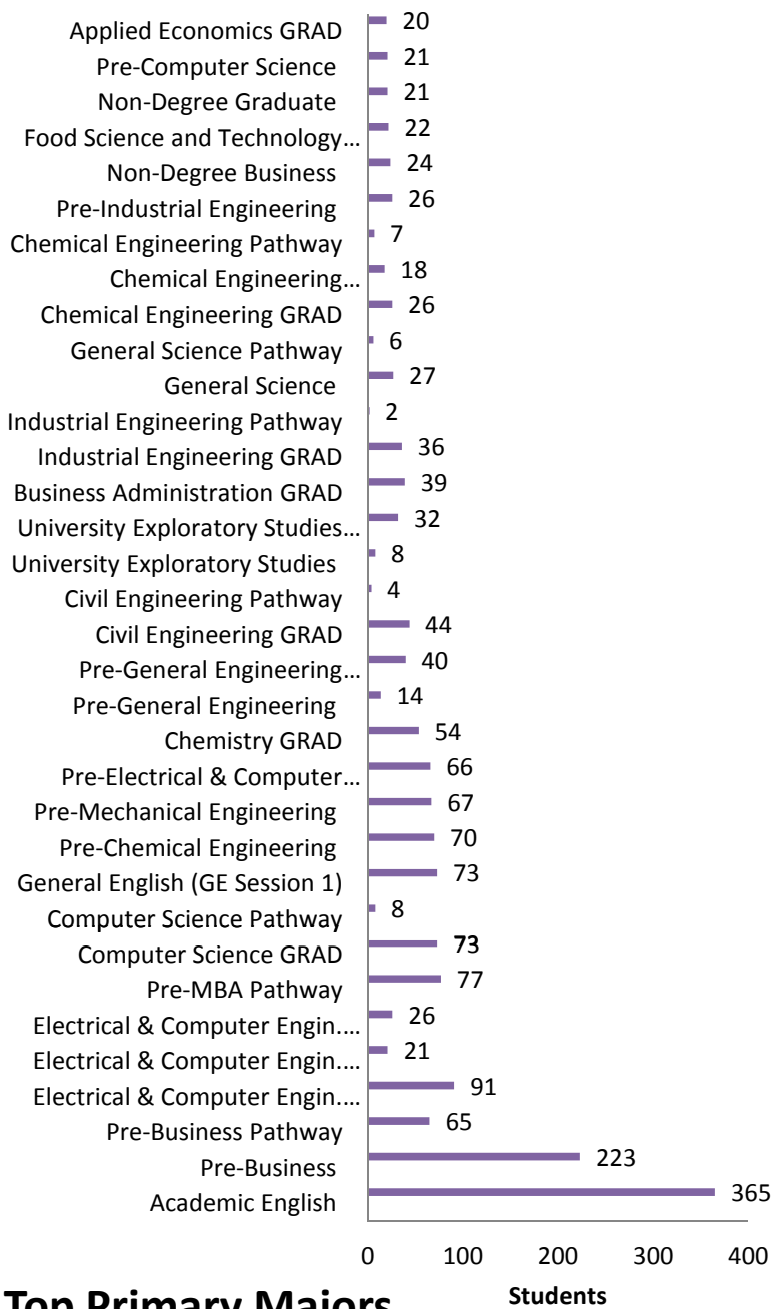
Business and Engineering		Total
College of Business		102
Pre-Business Program		365
College of Engineering		453
Pre-Engineering Program		377
Total		1297

Other Units		Total
Graduate School		62
University Exploratory Study		40
Intensive English Program		444
Total		546
Grand Total		2359

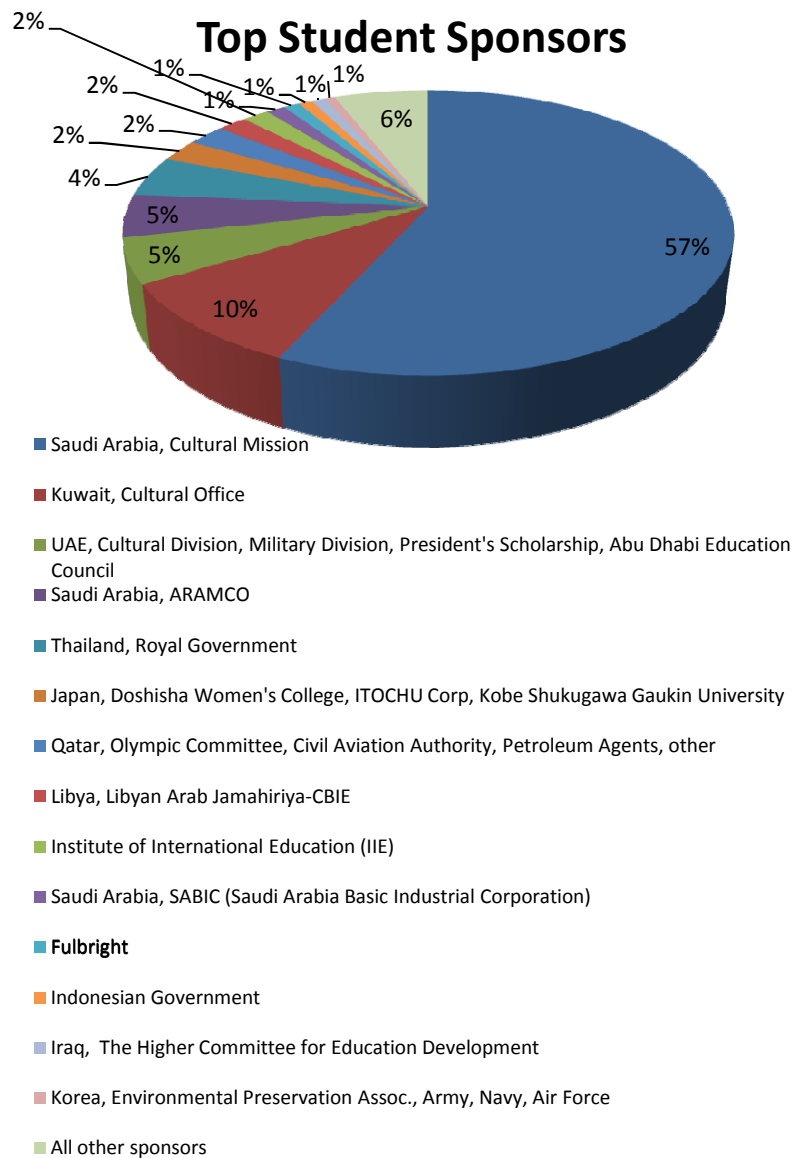


Primary College	Total
College of Agricultural Science	82
College of Business	102
Pre-Business Program	365
College of Education	3
College of Engineering	453
Pre-Engineering Program	377
College of Forestry	25
College of Health & Human Science	52
College of Liberal Arts	73
College of Oceanic & Atmospheric Science	17
College of Pharmacy	29
College of Public Health & Human Science	21
College of Science	209
College of Veterinary Medicine	5
Graduate School	62
University Exploratory Study	40
Intensive English Program (GE session 1, AE, SAWE)	444
Grand Total	2359

Top Primary Majors	Total
Academic English	365
Pre-Business	223
Pre-Business Pathway	65
Electrical & Computer Engin. GRAD	91
Electrical & Computer Engin. UNDERGRAD	21
Electrical & Computer Engin. Pathway	26
Pre-MBA Pathway	77
Computer Science GRAD	73
Computer Science Pathway	8
General English (GE Session 1)	73
Pre-Chemical Engineering	70
Pre-Mechanical Engineering	67
Pre-Electrical & Computer Engineering	66
Chemistry GRAD	54
Pre-General Engineering	14
Pre-General Engineering Pathway	40
Civil Engineering GRAD	44
Civil Engineering Pathway	4
University Exploratory Studies	8
University Exploratory Studies Pathway	32
Business Administration GRAD	39
Industrial Engineering GRAD	36
Industrial Engineering Pathway	2
General Science	27
General Science Pathway	6
Chemical Engineering GRAD	26
Chemical Engineering UNDERGRAD	18
Chemical Engineering Pathway	7
Pre-Industrial Engineering	26
Non-Degree Business	24
Food Science and Technology GRAD	22
Non-Degree Graduate	21
Pre-Computer Science	21
Applied Economics GRAD	20
All other majors	628
All other Pathway majors	15
Grand Total	2359



Top 25 Countries of Citizenship	Total
Peoples Republic Of China	790
Saudi Arabia	420
South Korea	191
India	106
Thailand	89
Japan	81
Taiwan - Republic of China	57
Kuwait	56
Iran	49
Canada	43
Indonesia	33
United Arab Emirates	32
Vietnam	31
United Kingdom	26
Hong Kong	25
Qatar	20
France	17
Libya	15
Germany	14
Australia	13
Bangladesh	11
Denmark	11
Russia	11
Mexico	10
N/A	17
All other countries	191
Grand Total	2359



Top Student Sponsors	Total
Sponsors are government agencies, public organizations, or private organizations which provide partial or full financial support to the student.	
Saudi Arabia, Cultural Mission	333
Kuwait, Cultural Office	57
UAE, Cultural Division, Military Division, President's Scholarship, Abu Dhabi Education Council	30
Saudi Arabia, ARAMCO	28
Thailand, Royal Government	27
Japan, Doshisha Women's College, ITOCHU Corp, Kobe Shukugawa Gaukin University	15
Qatar, Olympic Committee, Civil Aviation Authority, Petroleum Agents, other	14
Libya, Libyan Arab Jamahiriya-CBIE	11
Institute of International Education (IIE)	10
Saudi Arabia, SABIC (Saudi Arabia Basic Industrial Corporation)	7
Fulbright	6
Indonesian Government	5
Iraq, The Higher Committee for Education Development	5
Korea, Environmental Preservation Assoc., Army, Navy, Air Force	4
All other sponsors	35
Grand Total	587

